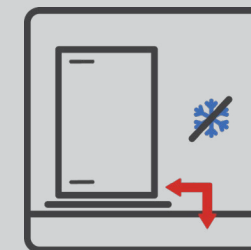
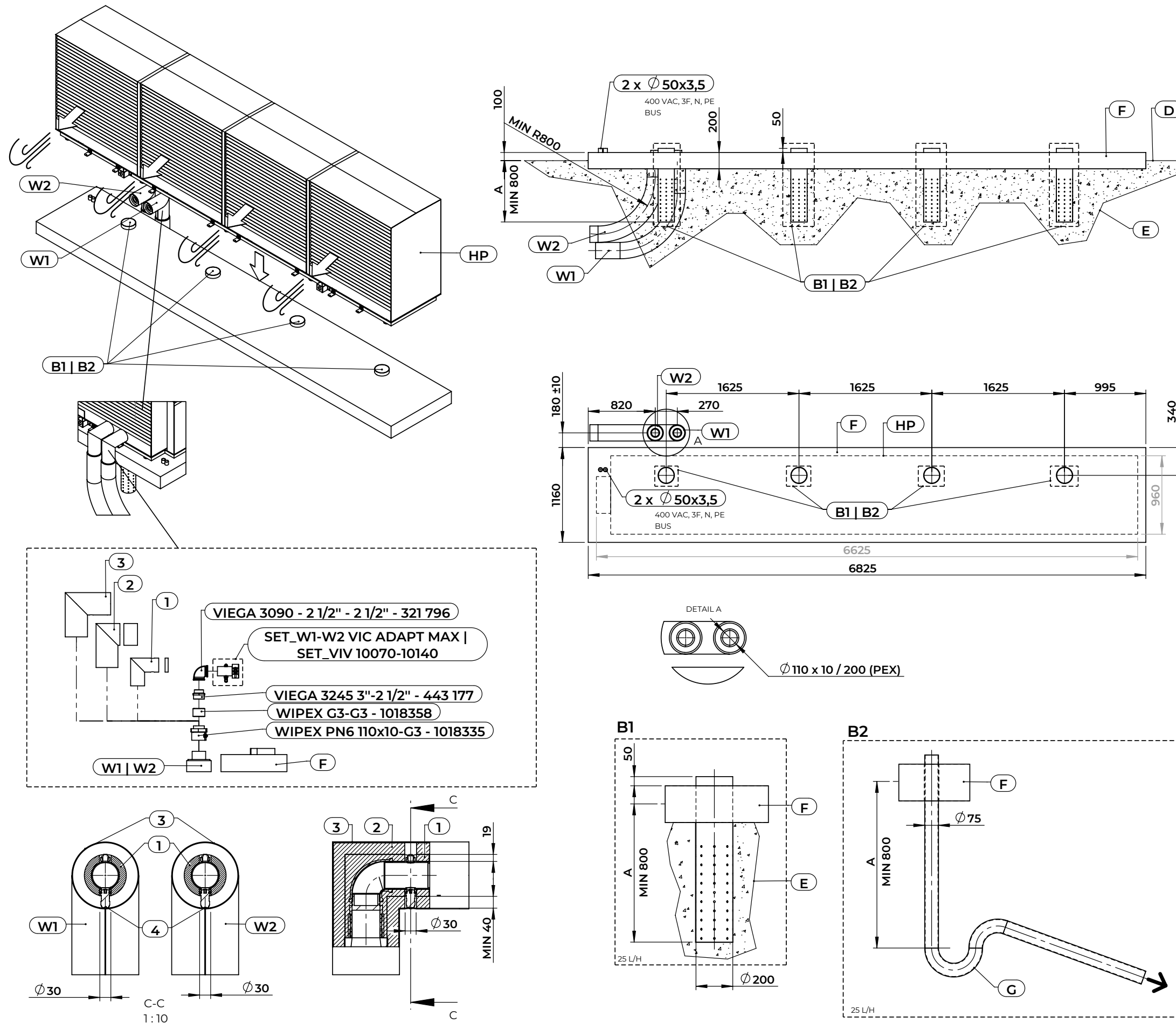


## AirCalor-K-140-I-HT

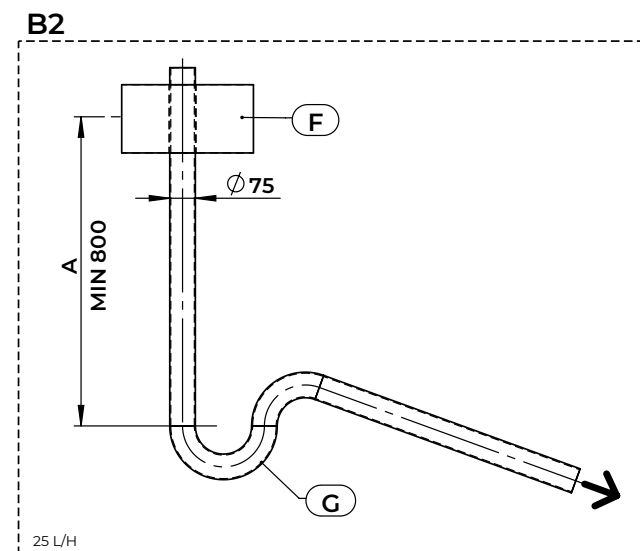
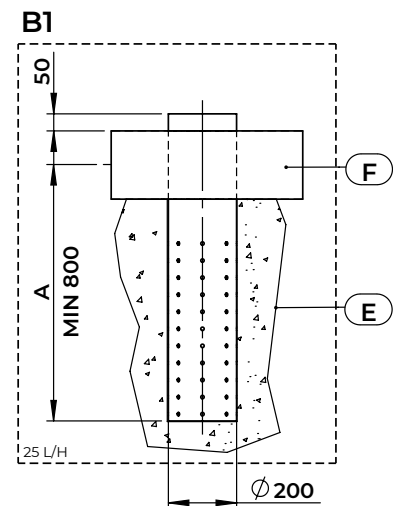
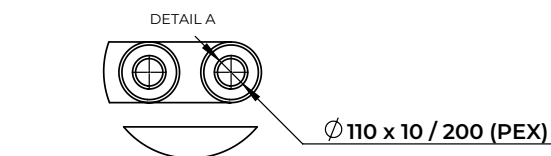
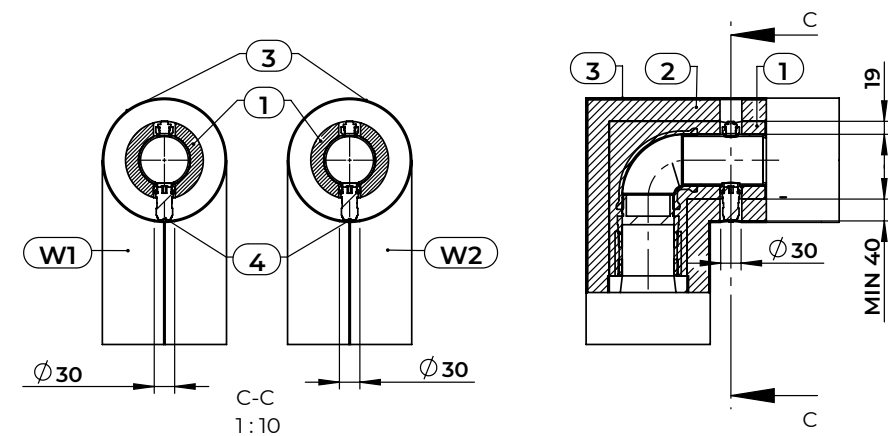
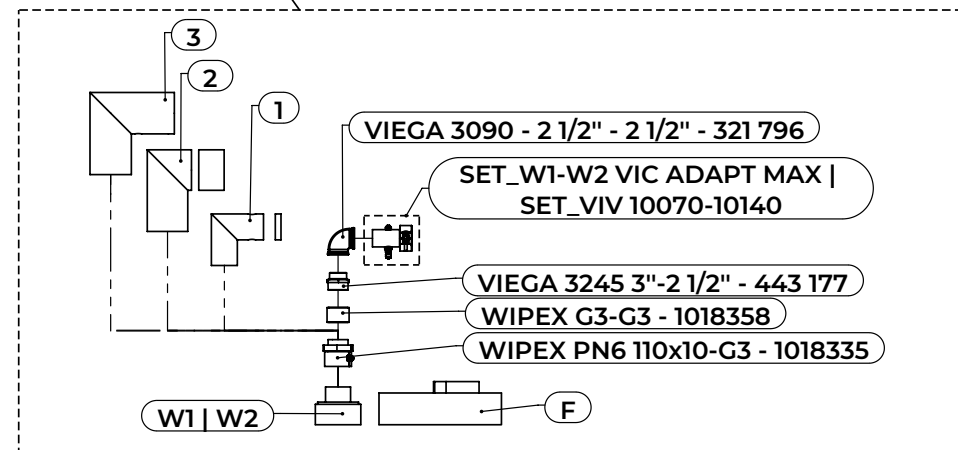
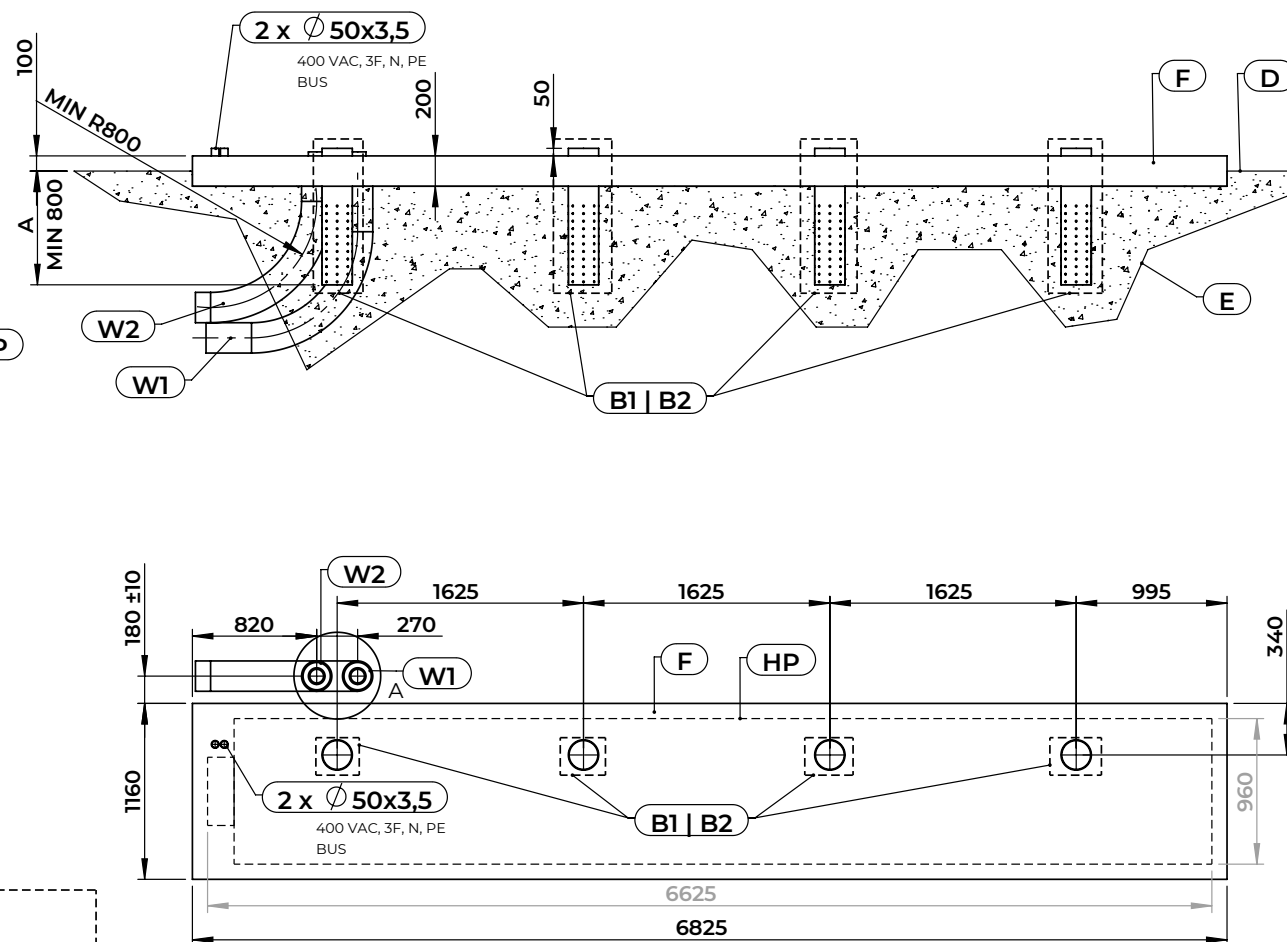
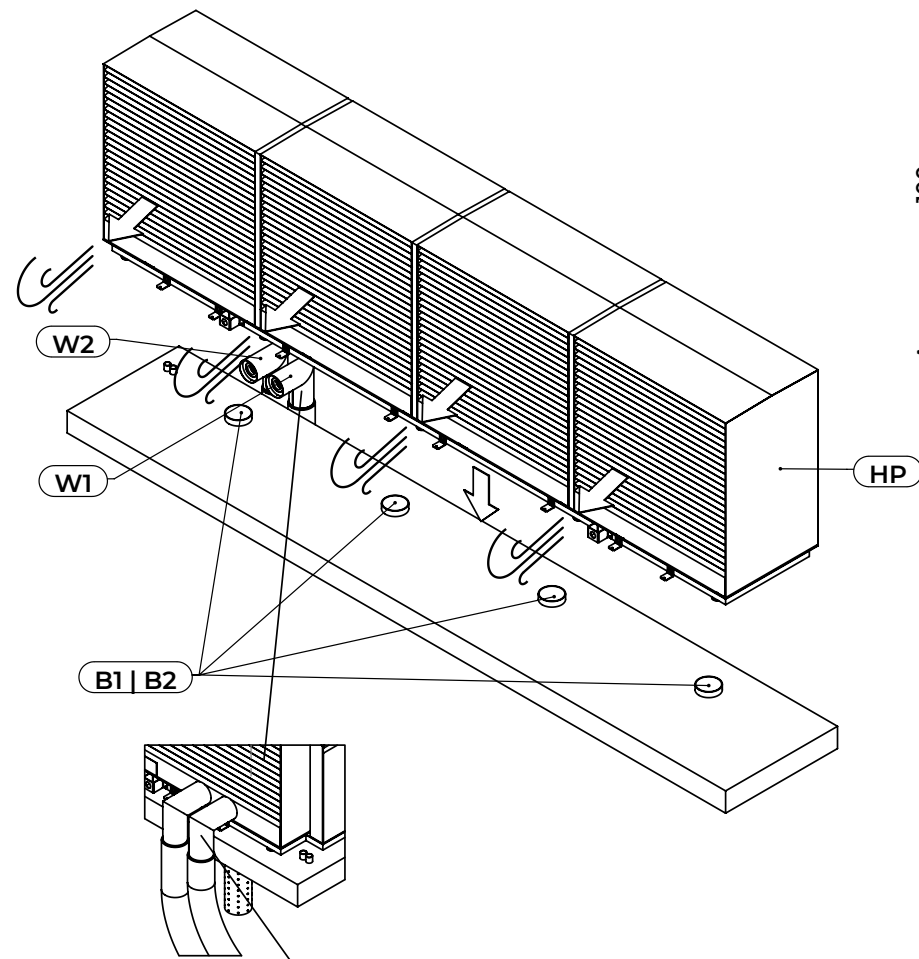
TPZ\_(AF) AM10140



Check for tightness.

Insulate the pipes and connections with vapour barrier insulation. The minimum thickness of insulation should be 60 mm.



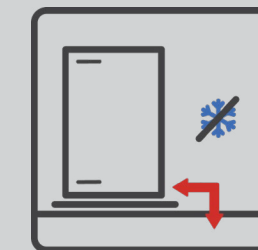


# AirCalor-K-140-I-HT

DE

TPZ\_(AF) AM10140

<b>A</b>	TIEFENFROST
<b>B1</b>	GELOCHTES ABLAUFROHR
<b>B2</b>	ABFLUSSROHR
<b>D</b>	GELÄNDENIVEAU
<b>E</b>	VERDICHTETER BODEN - WASSERDURCHLÄSSIG
<b>F</b>	STAHLBETONFUNDAMENT
<b>G</b>	SIPHON
<b>HP</b>	WÄRMEPUMPE
<b>W1</b>	AUSTRITT
<b>W2</b>	EINTRITT
<b>1</b>	DAMPFSPERRENISOLIERUNG
<b>2</b>	DAMPFSPERRENISOLIERUNG
<b>3</b>	SCHUTZSCHILD DER ROHRISOLIERUNG
<b>4</b>	IM FALL VON SET_VIV 10070-10140: LOCH IM SCHUTZSCHILD DER ROHRISOLIERUNG FÜR DEN WASSERABLAUF.



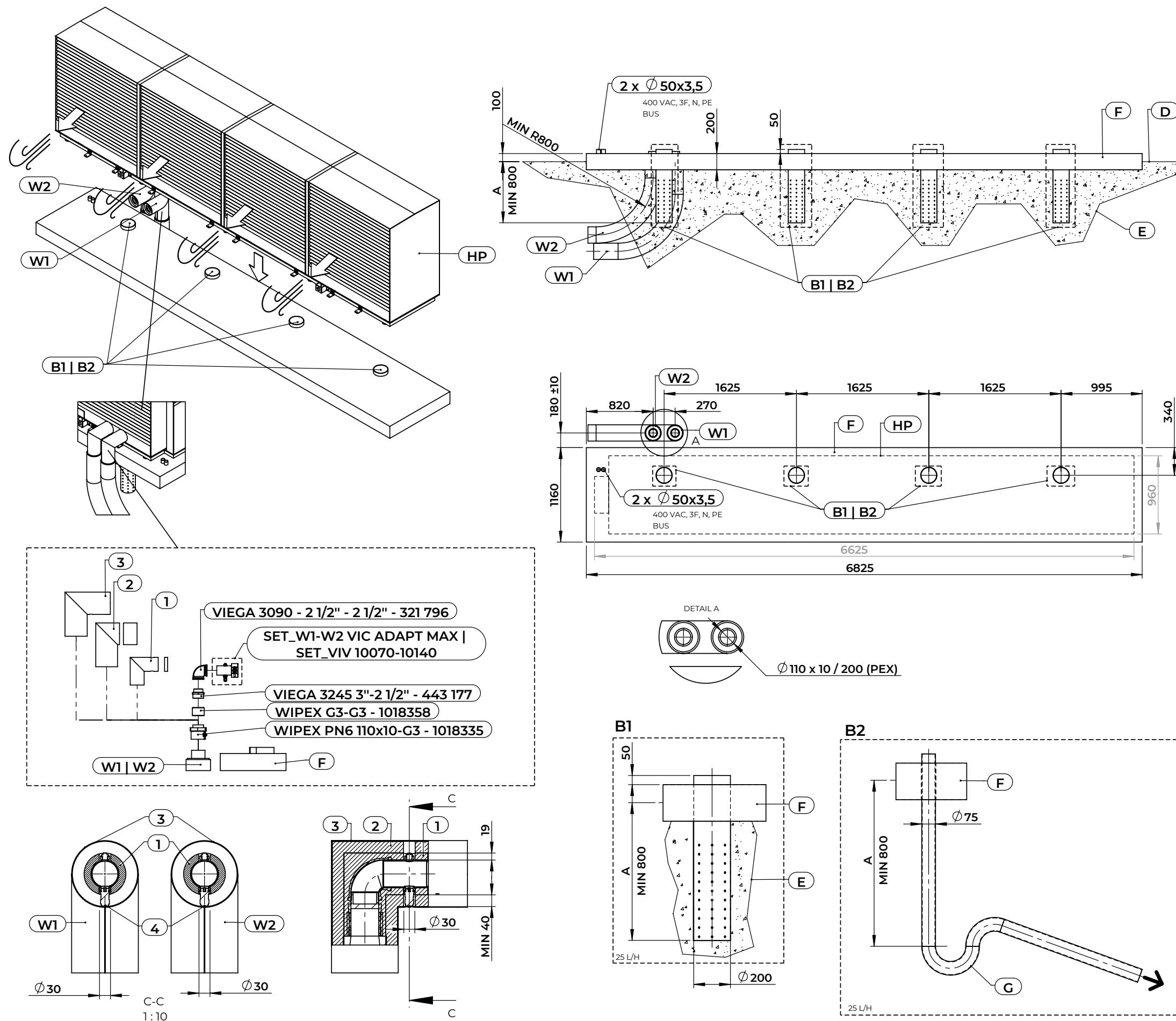
Auf Dichtigkeit prüfen.

Isolieren Sie die Rohre und Anschlüsse mit einer Dampfsperren-Isolierung. Die Mindeststärke der Isolierung sollte 60 mm betragen.

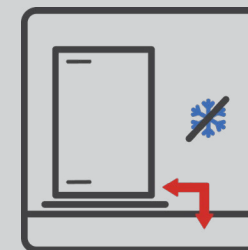


# AirCalor-K-140-I-HT

TPZ\_(AF) AM10140



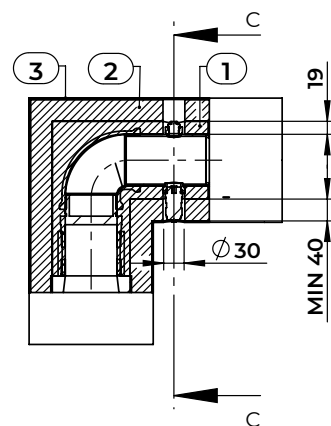
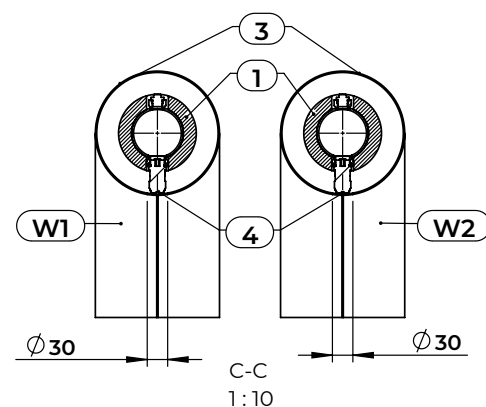
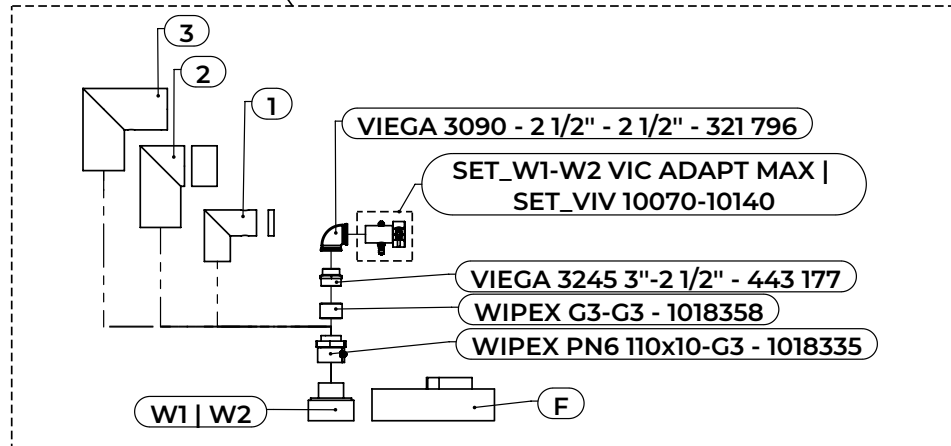
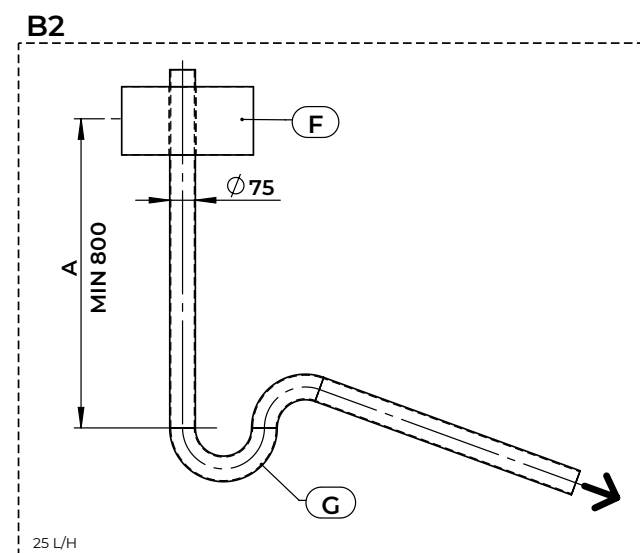
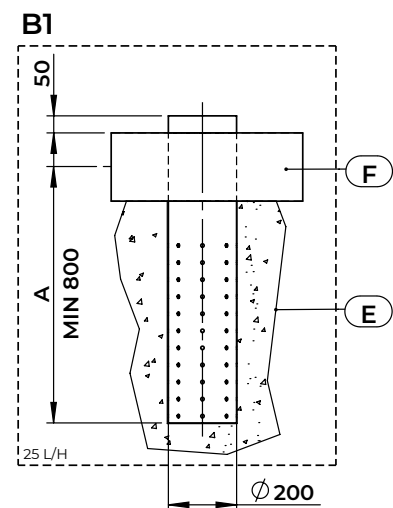
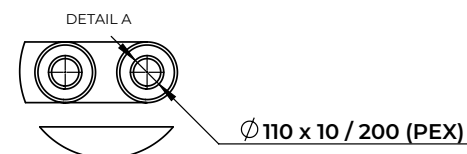
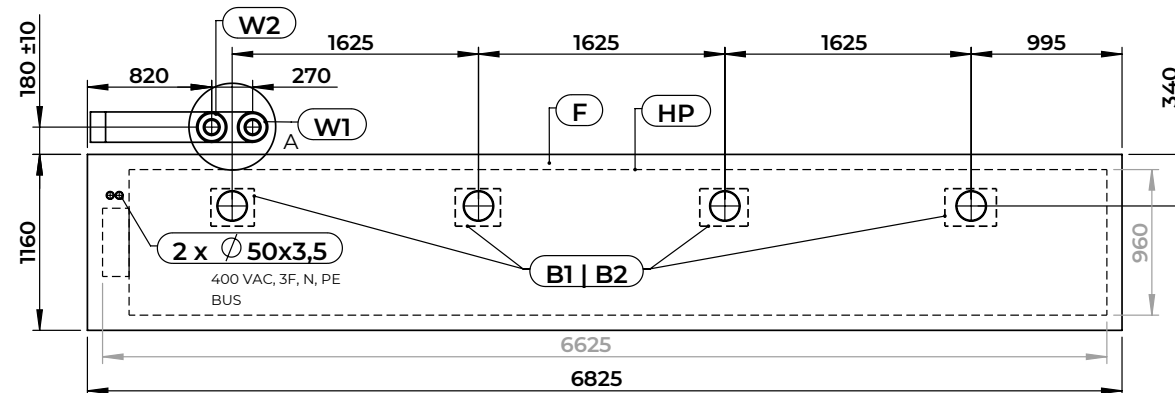
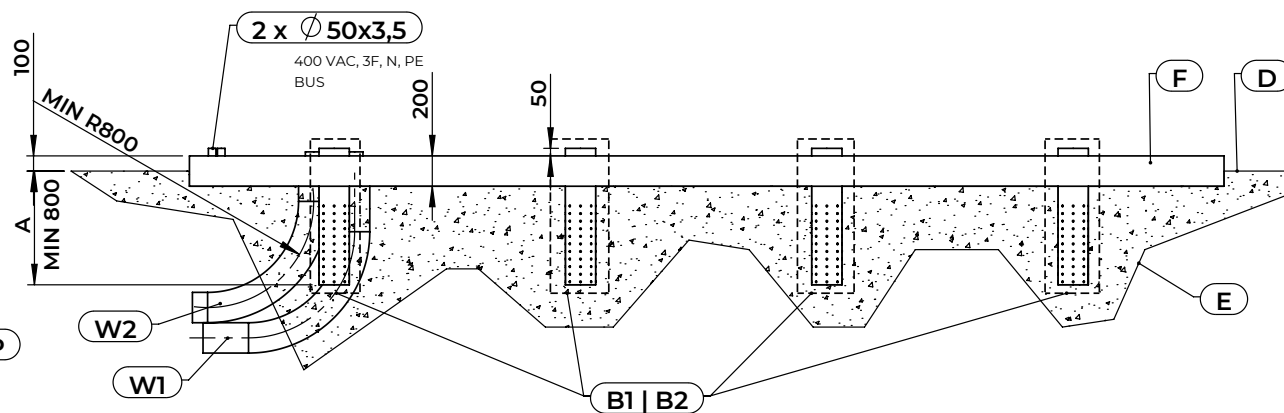
A	PROFONDITÀ DI GELO
B1	TUBO DI DRENAGGIO PERFORATO
B2	TUBO DI SCARICO DEL DRENAGGIO
D	LIVELLO DEL PAVIMENTO
E	TERRENO COMPATTATO - PERMEABILE ALL'ACQUA
F	BASAMENTO IN CEMENTO ARMATO
G	SIFONE
HP	POMPA DI CALORE
W1	MANDATA
W2	RITORNO
1	ISOLAMENTO A BARRIERA AL VAPORE
2	ISOLAMENTO A BARRIERA AL VAPORE
3	PROTEZIONE PER L'ISOLAMENTO DEI TUBI
4	NEL CASO DI SET_VIV 10070-10140: REALIZZARE UN FORO NELLA PROTEZIONE DELL'ISOLAMENTO PER L'EVACUAZIONE DELL'ACQUA.



Verificare la tenuta.

Isolare i tubi e i raccordi con isolamento a cellule chiuse. Lo spessore minimo dell'isolamento deve essere 60 mm.

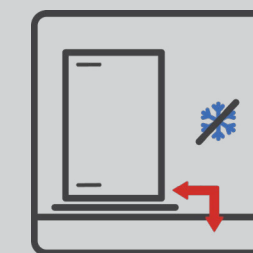




## FR

TPZ\_(AF) AM10140

<b>A</b>	PROFONDEUR DE GEL
<b>B1</b>	TUYAU DE DRAINAGE PERFORÉ
<b>B2</b>	TUYAU D'ÉVACUATION DES EAUX DE DRAINAGE
<b>D</b>	NIVEAU DU SOL
<b>E</b>	SOL COMPACTÉ-PERMÉABLE À L'EAU
<b>F</b>	FONDATION EN BÉTON ARMÉ
<b>G</b>	SIPHON
<b>HP</b>	POMPE À CHALEUR
<b>W1</b>	SORTIE
<b>W2</b>	ENTRÉE
<b>1</b>	ISOLATION PARE-VAPEUR
<b>2</b>	ISOLATION PARE-VAPEUR
<b>3</b>	BOUCLIER D'ISOLATION DE TUYAU
<b>4</b>	DANS LE CAS DE SET_VIV 10070-10140 : TROU DANS LE BOUCLIER DE L'ISOLATION DES TUYAUX POUR PERMETTRE L'ÉVACUATION DE L'EAU.



Isoler les tuyaux et raccords avec une isolation pare-vapeur. L'épaisseur minimale de l'isolation doit être de 60 mm.